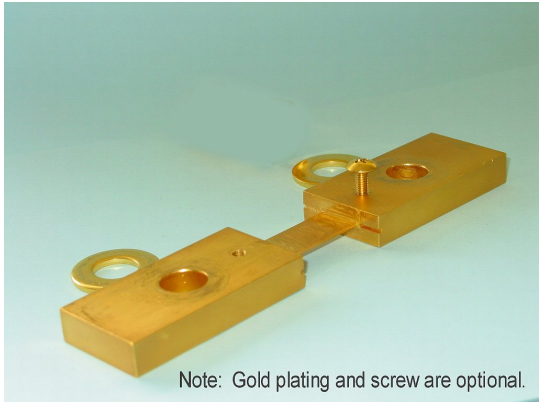


4 端子電流検出抵抗器
CURRENT SHUNT RESISTORS

NSS100, NSS200, NSS400
NSS600, NSS1000



Note: Gold plating and screw are optional.

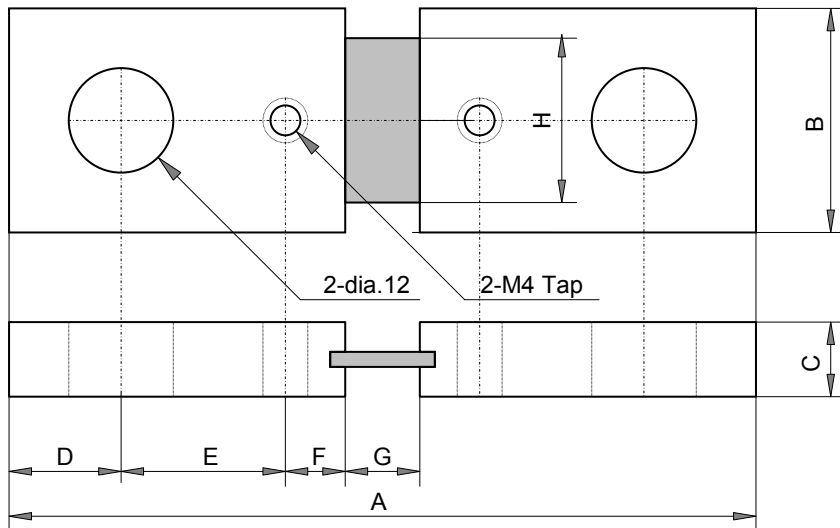
特長用途

100A から 1000A の大電流電流検出抵抗器。
長期安定性に優れ、低熱電力、検出電圧の低温度依存性、高性能の電流検出抵抗器。
電流経路に直接接続し、60mV-100mV フルスケールの電圧計に直接接続可能。
高性能電源装置、電力変換装置、電流計測システム用。

Features and Applications

Large current shunt resistors for ampere-meters, designed for power electric equipment.
Excellent long-term stability, low emf and low TCR.
Easy current measurement is performed by attaching to current bus directory and connecting to

寸法と材質、Dimension (mm)



材質、Material

Terminal: Cu plated Ni.
Resistance: Ni alloy.
Contact: Weld.

mm	NSS100	NSS 200	NSS 400	NSS 600	NSS 1000
A	100+/-0.2	100+/-0.2	100+/-0.2	100+/-0.2	100+/-0.2
B	30+/-0.2	30+/-0.2	30+/-0.2	50+/-0.2	70+/-0.2
C	10+/-0.2	10+/-0.2	10+/-0.2	10+/-0.2	20+/-0.2
D	(15)	(15)	(15)	(15)	(15)
E	22+/-0.2	22+/-0.2	22+/-0.2	22+/-0.2	22+/-0.2
F	8+/-0.2	8+/-0.2	8+/-0.2	8+/-0.2	8+/-0.2
G	(10)	(10)	(10)	(10)	(10)
H	(13)	(26)	(26)	(40)	(65)

形名称、Ordering Information

P/N	Type	TCV	Voltage	Detect Volt Tolerance	Remarks
NSS 100A60mVF	NSS 100	+/-100ppm/K(A)	60mV	+/-1%(F)	
NSS 600A60mVF	NSS 600	+/-100ppm/K(A)	60mV	+/-1%(F)	
NSS 1000A100mVF	NSS 1000	+/-100ppm/K(A)	100mV	+/-1%(F)	

4 端子電流検出抵抗器

CURRENT SHUNT RESISTORS

NSS100, NSS200, NSS400, NSS600, NSS1000

仕様・性能、Specification and Performance

	NSS 100	NSS 200	NSS 400	NSS 600	NSS 1000
定格電流、Rating Current (A)	100	200	400	600	1000
定格出力電圧、Rating Output (mV)	60, 100	60, 100	60, 100	60, 100	60, 100
換算抵抗値、Resistance (milliohms)	(0.60, 1.00)	(0.30, 0.50)	(0.15, 0.25)	(0.10, 0.167)	(0.06, 0.10)
出力電圧許容差、Voltage Tolerance (%)	+/-1	+/-1	+/-1	+/-1	+/-1
電圧温度係数、TCV (ppm/K)	+100/-0	+100/-0	+100/-0	+100/-0	+100/-0
熱抵抗、Heat Resistance (K/W)	1.5	0.55	0.42	0.35	0.23
定格使用温度、Rated Operating Temp.	-55 - +70 deg C				
使用温度範囲、Operating Temp.	-55 - +155 deg C				
保存温度範囲、Storage Temp.	-55 - +155 deg C				
重量、Net Weight (Kg)	0.240	0.245	0.250	0.450	0.560

(注 1) 熱抵抗は、抵抗体ホットスポットから、電流端子穴までの熱抵抗。

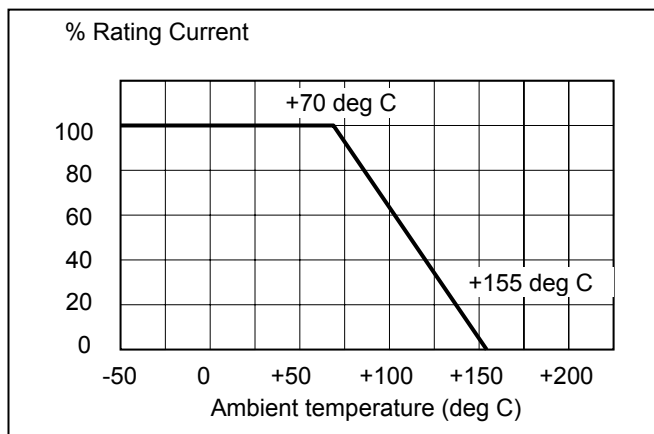
(注 2) 50mV-100mV の範囲の任意の検出電圧の製品は、オプションにて提供可能。

(注 3) 電圧電流データは、オプションで、製品に添付可能。

Note (1) Heat resistance is specified as resistor hot spot to terminal hole position.

Note (2) Current detect resistor is available, but specification will be defined as V-I characteristics at detecting port (M4 screws).

Note (3) V-I test data will be attached per requirement, 0A to 100A, optionally.

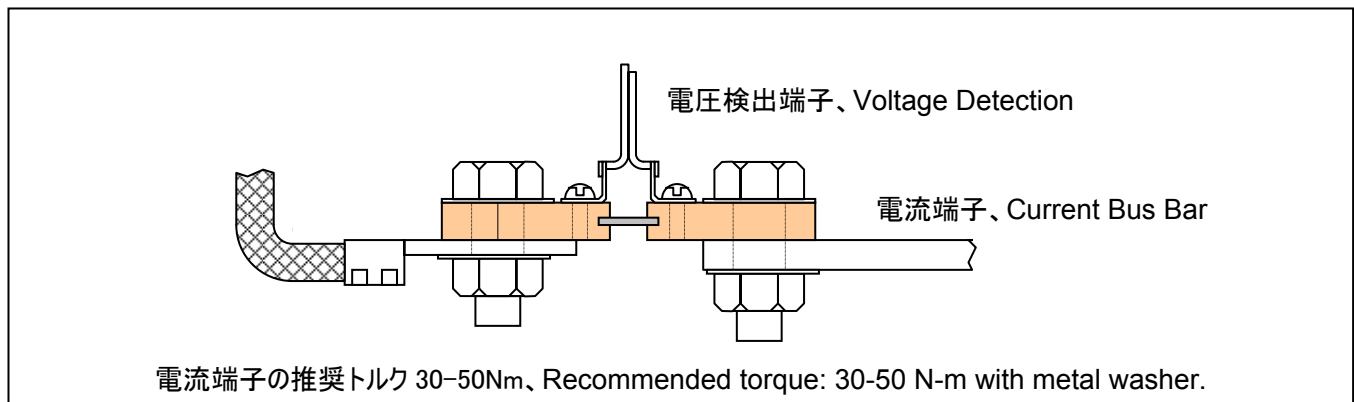


V-I 特性から計算した抵抗値

Resistance calculated from the V-I characteristic.

	60mV	100mV
NSS100	0.60milliohm	1.00milliohm
NSS200	0.30milliohm	0.50milliohm
NSS400	0.15milliohm	0.25milliohm
NSS600	0.10milliohm	0.17milliohm
NSS1000	0.06milliohm	0.10milliohm

接続方法、Installation



電流端子の推奨トルク 30-50Nm、Recommended torque: 30-50 N-m with metal washer.